



Operation 1/2

Complies with the requirement of The Protection of Animals at the Time of Killing (Amendment) (England) Regulations 2022 (Legislation.gov.uk) for piglets under 10 kg and kids under 4kg.

- 1. Operator & bystander safety is your 1st priority!**
Wear safety glasses and always point the TED in a safe direction.

⚠ DANGER
This Captive Bolt Tool is for Animal Dispatch Only!
Improper use of this tool can result in death or serious injury!
Never point this tool at yourself or others in the work area!

- 2. TED Components & Specifications**

Energy = 29 Joules

Bolt Velocity = 31 m/s

Device Mass = 1.8 kg





- Operator & bystander safety is your 1st priority! Wear safety glass and always point the TED in a safe direction.**

⚠ DANGER

This Captive Bolt Tool is for Animal Dispatch Only!
Improper use of this tool can result in death or serious injury!
Never point this tool at yourself or others in the work area!

- Only use Paslode brand trim fuel. Follow directions on canister. If TED does not fire, reinstall canister and/or install new canister.**

Follow directions printed on fuel canister



**Paslode
816007**

Expired fuel is attributed to 98% of firing issues. Check label on bottom of fuel canister!

- Charge battery fully before use with charger provided. Red LED on charger indicates active charging and will change to green LED at full charge. Battery may remain in charger when charge is complete without being harmed. Note: flashing green LED on TED indicates installed battery is sufficiently charged to fire.**



- Practice installing the battery. Note battery in two positions: ON or OFF. (In the OFF-position battery remains captive in TED, recommended.)**





4. Identify TED firing system: Standard or Locking.

Standard: cleaning; Locking: euthanasia

Examine the Activator:

With fuel removed press the activator on a solid surface. If the activator spring returns, it is “standard.” If the activator locks back, it is “locking.”

Pull the knurled nut to unlock. Practice using the activator without fuel until this specific operation is fully understood for either firing system. **Turn the knurled nut to select: clockwise for “standard” and/or counter-clockwise for “locking.”**



5. Practice loading and unloading new & unexpired fuel.

Open Fuel Door by Pushing the Door Forward, then Lifting it Back
Abra la puerta del combustible empujándola hacia adelante y luego levantándola



Lift Fuel Block Assembly
Levante conjunto de bloque de combustible



Insert Fuel Cartridge
Inserte el Cartucho de Combustible



Center Fuel Stem on Top of Cartridge
Bloque de combustible central en la parte superior del cartucho de combustible



Ensure Fuel Door Brackets Drop into the Fuel Chamber
Asegúrese de que los soportes de la puerta de combustible caigan en la cámara de combustible



Press Fuel Door in With Thumb
Presione la puerta de combustible con el pulgar





Complies with the requirement of The Protection of Animals at the Time of Killing (Amendment) (England) Regulations 2022 (Legislation.gov.uk) for piglets under 10 kg and kids under 4kg.

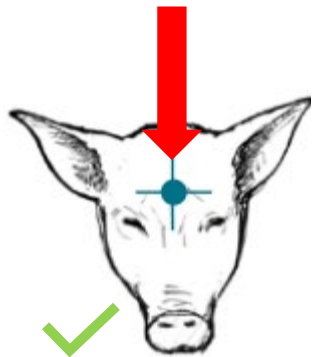
1. ***Specific requirements for non-penetrating captive bolt use. A non-penetrative captive bolt device can be used for slaughter, depopulation and other situations for killing piglet, within certain specified parameters:***
 - 1.1 ***Species: Piglets of less than 10 kg of live weight. Refer to page 5.
Species: Kids of less than 4 kg of live weight. Refer to page 7.***
 - 1.2 ***Parameters: The device must deliver a minimum kinetic energy of 27.7 Joules.
Refer to page 1.***
 - 1.3 ***Monitor Efficacy: Confirm the physical signs of insensibility (no rhythmic breathing, no corneal reflex, and no response to nose prick) & death.***
 - 1.4 ***Recommended Maintenance: To ensure consistent device minimum kinetic energy.
Refer to pages 11 - 12.***

2. ***General requirements of legislation for non-penetrating captive bolt use.***
 - 2.1 ***Piglets of less than 10 kg of live weight. Minimum kinetic energy 27.7 Joules.***
 - 2.2 ***Kids of less than 4 kg of live weight. Minimum kinetic energy 27.8 Joules.***
 - 2.3 ***The non-penetrative captive bolt device remains a permitted method for simple stunning for cattle, sheep and goats (ruminants) under 10kg live weight, as well as poultry, rabbits and hares. It can be used for slaughter, depopulation and other situations of poultry, rabbits, hares and lambs of less than 10kg live weight and kids of less than 10kg live weight and slaughter only for other ruminants.***
 - 2.4 ***The operator must apply the device in the proper position and use the correct strength of cartridge or other propellant in accordance with the manufacturer's instructions to produce an effective stun or kill, as appropriate.***



Targeting Piglet

1. **Install fuel and battery as shown on pages 2-3.**
2. **Press activator to lock back in firing position.**
3. **Confirm TED is operational by point down and “dry firing” (fire into the air, NOT into a solid object!)**
4. **Pull knurled nut on activator to reset TED for next firing.**
Note: activator moves down to starting position.
5. **Support the piglet’s head against a solid surface. Use Bock Industries piglet restraint if available.**
6. **Locate target: Top center of head, between eyes & ears.**



7. **Press activator to lock back. Firing must take place within 10 seconds, otherwise for safety, the TED will auto-deactivate.**
8. **Locate TED firmly on target and squeeze trigger.**

Video Training

bock-industries.com



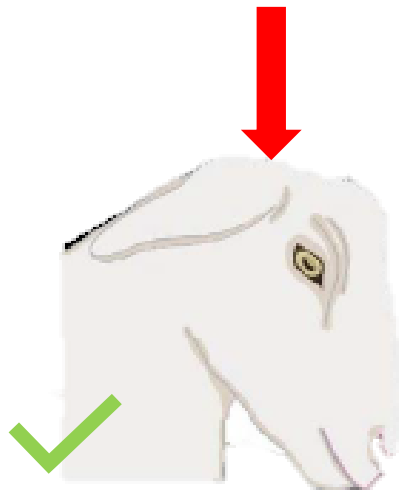
Targeting Piglet (continued)

- 9. Move TED away during animal movement phase.***
- 10. Pull knurled nut on activator to reset TED for next firing.
Note activator moves to initial position.***
- 11. Confirm physical signs of insensibility (no rhythmic breathing,
no corneal reflex, and no response to nose prick) & death.***



Targeting Kids

1. **Install fuel and battery as shown on pages 2-3.**
2. **Press activator to lock back in firing position.**
3. **Confirm TED is operational by point down and “dry firing” (fire into the air, NOT into a solid object!)**
4. **Pull knurled nut on activator to reset TED for next firing.**
Note: activator moves down to starting position.
5. **The shooting position for a kid: At the back of the head, on the midline, with the chin tucked into the neck.**



6. **Press activator to lock back. Firing must take place within 10 seconds, otherwise for safety, the TED will auto-deactivate.**
7. **Locate TED firmly on target and squeeze trigger.**

Video Training

bock-industries.com



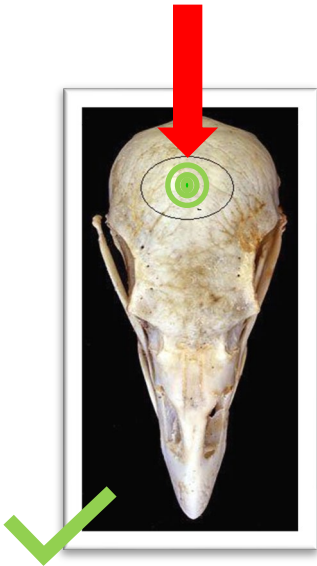
Targeting Kids (continued)

- 9. Move TED away during animal movement phase.**
- 10. Pull knurled nut on activator to reset TED for next firing.
Note activator moves to initial position.**
- 11. Confirm physical signs of insensibility (no rhythmic breathing, no corneal reflex, and no response to nose prick) & death.**



Targeting Turkey

1. **Install fuel and battery as shown on pages 2-3.**
2. **Press activator to lock back in firing position.**
3. **Confirm TED is operational by point down and “dry firing” (fire into the air, NOT into a solid object!)**
4. **Pull knurled nut on activator to reset TED for next firing.**
Note: activator moves down to starting position.
5. **Locate top center of turkey head, midway between eye and ear. Hold TED’s activator 0.5” – 1.0” above turkey head.**



6. **Press activator to lock back. Firing must take place within 10 seconds, otherwise for safety, the TED will auto-deactivate.**
7. **Locate TED above target and squeeze trigger.**

Video Training

bock-industries.com



Targeting Turkey (continued)

- 9. Move TED away during animal movement phase.**
- 10. Pull knurled nut on activator to reset TED for next firing.
Note activator moves to initial position.**
- 11. Confirm physical signs of insensibility (no rhythmic breathing, no corneal reflex, and no response to nose prick) & death.**



Targeting Goose/Duck

1. **Confirm Duck SUBJECT ADAPTER is attached to ACTIVATOR of the TED. #2 Subject Adapter is factory installed (max force). Change to #3 Subject Adapter if there is too much damage.**



2. **Install fuel and battery as shown on Quick Start OPERATION.**
3. **Press activator to lock back. Firing must take place within 15 seconds, otherwise for safety, the TED will auto-deactivate.**
4. **Confirm TED is operational by point down and “dry firing” (into the air, NOT into a solid object!)**
5. **Pull knurled nut on activator to reset TED for next firing.
Note: activator moves down to starting position.**
6. **Press activator to lock back.**
7. **Curve of Subject Adapter matches curve of bird’s head. Locate Subject Adapter on top of head as shown above.**
8. **Squeeze trigger.**
9. **Move away from duck during movement phase.**
10. **Pull knurled nut on activator to reset TED for next firing.
Note: activator moves to initial position.**

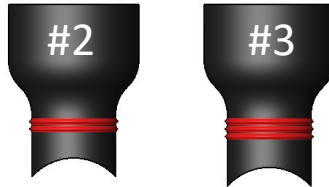
Video Training

bock-industries.com

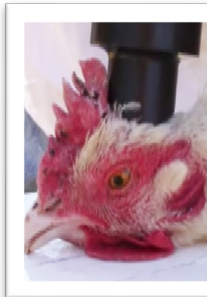


Targeting Chicken

1. **Confirm Broiler SUBJECT ADAPTER is attached to ACTIVATOR of the TED. #2 Subject Adapter is factory installed (max force). Change to #3 Subject Adapter if there is too much damage.**



2. **Install fuel and battery as shown on Quick Start OPERATION.**
3. **Press activator to lock back. Firing must take place within 15 seconds, otherwise for safety, the TED will auto-deactivate.**
4. **Confirm TED is operational by point down and “dry firing” (into the air, NOT into a solid object!)**
5. **Pull knurled nut on activator to reset TED for next firing. Note: activator moves down to starting position.**
6. **Press activator to lock back.**
7. **Curve of Subject Adapter matches profile of bird’s head. Subject Adapter on top of head, against back of comb.**
8. **Squeeze trigger.**
9. **Move away from chicken during bird movement phase.**
10. **Pull knurled nut on activator to reset TED for next firing. Note: activator moves to initial position.**



Video Training

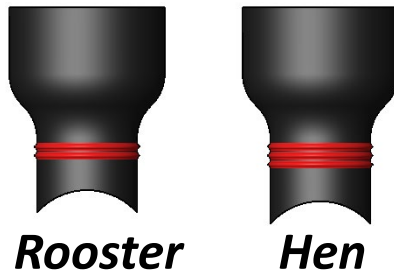
bock-industries.com



Subject Adapters

Subject adapters help fit the TED to the individual animal's head. They also help manage the bolt travel to improve aesthetics. Optional and mandatory use is shown.

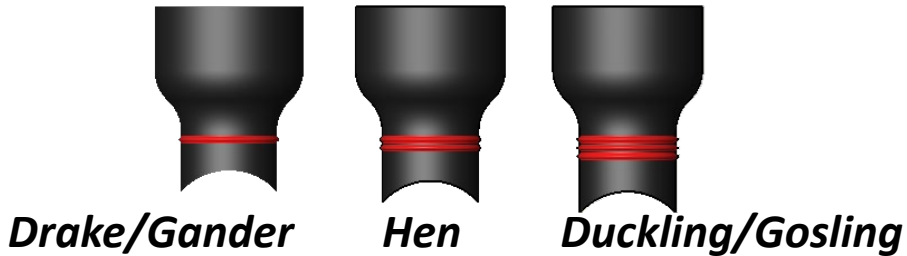
Chicken (mandatory)



Rooster

Hen

Duck/Goose (mandatory)

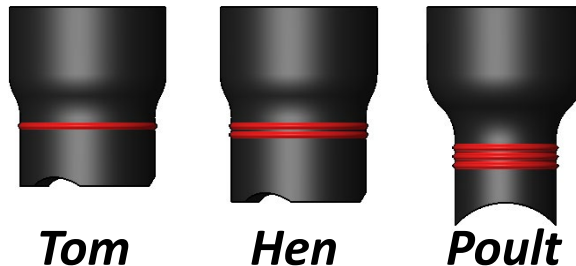


Drake/Gander

Hen

Duckling/Gosling

Turkey (optional)

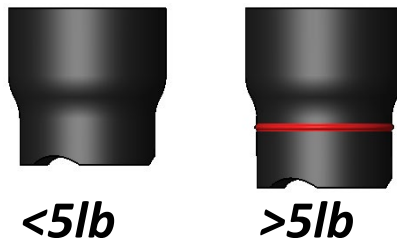


Tom

Hen

Poult

Piglets (optional)



<5lb

>5lb