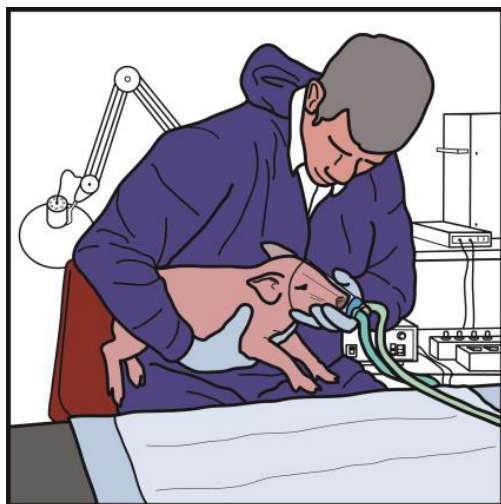


Research by:



Non-penetrating Captive Bolt Euthanasia

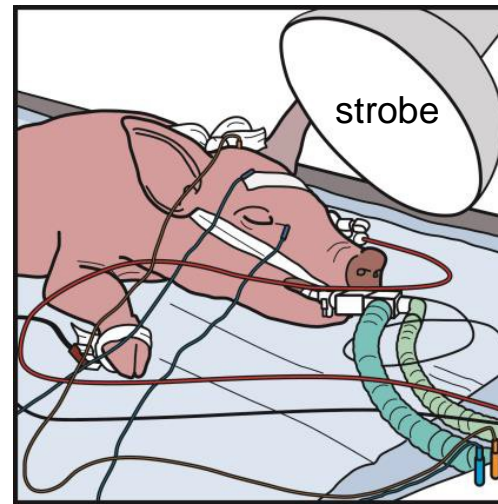
Causality Slaughter of Swine under 20 pounds.



1. Anesthesia



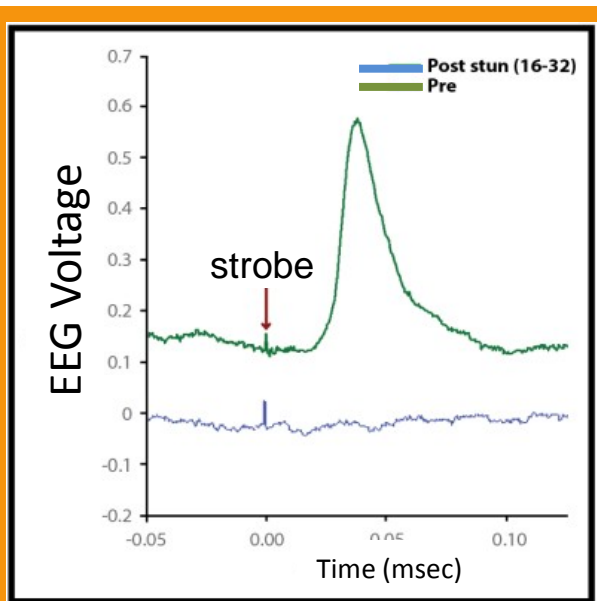
2. Intubation



3. Vitals monitored



4. Zephyr-EXL captive bolt



Post Stun Results

One firing of the Zephyr-EXL
Immediately and irreversibly stops
visually evoked response (strobe)
confirming immediate brain death.